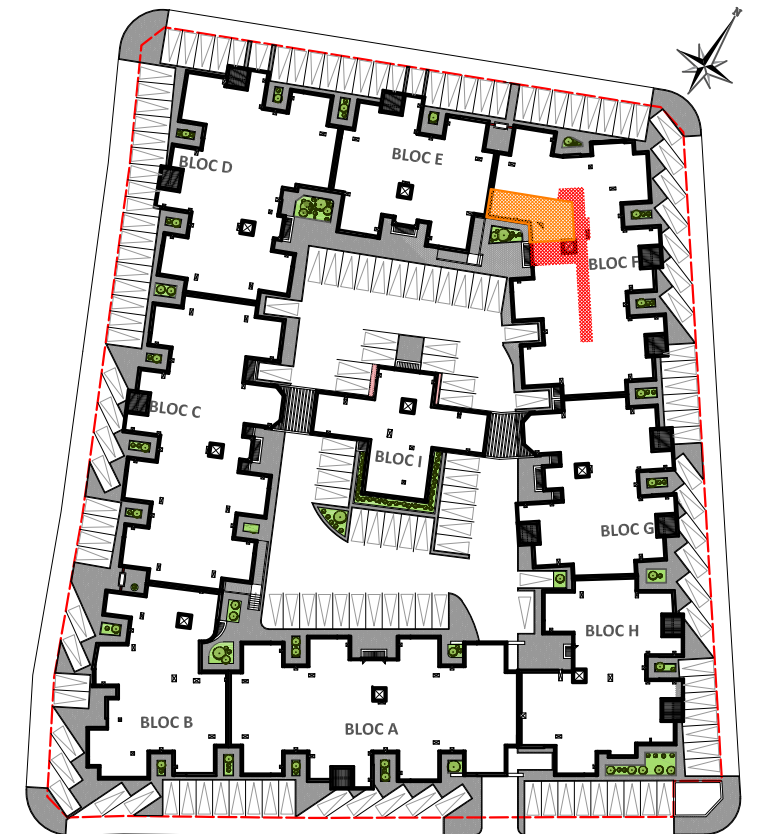


ECH 1/100

APPARTEMENTS F-0-7 → F-4-7 (S+2 - BLOC F - RDC → R+4)



SURFACES: (Appartements hors parties communes)

- Surface Hors Oeuvre:.....53.94 m²
- Surface Terrasse couverte:.....4.97 m²
- Surface Terrasse decouverte:.....0.00 m²

* SURFACE TOTALE COUVERTE:.....58.91m²

* SURFACE E.COMMUNS (BOLC F):.....323.39m²

SOCIETE NATIONALE IMMOBILIERE DE TUNISIE

ENSEMBLE RESIDENTIEL R+4 A USAGE
D'HABITATIONS
RESIDENCE NENUPHAR

Lot HC1 - LOTISSEMENT IBN RACHIQ - EZZAHROUNI

MEHDI BEN ISMAIL - ARCHITECTE D.P.L.G
06 RUE EZZAMEKHCHARI CITE MAHRAJENE MUTUELLEVILLE 1082 TUNIS
TEL ET FAX : 71 893 737 E-MAIL: mehdiবেনismail@planet.tn

WASSIM EL HEDI GHORBEL - ARCHITECTE E.N.A.U
RUE 8300 IMMEUBLE LUXOR II BUREAU B1.1, MONTPLAISIR 1073 TUNIS
MOBILE: 50 303 802 - E-MAIL : wassim_archi@hotmail.fr